

MODULAR® DISPENSING SYSTEMS



tomlinson®



No matter how you size it ... Tomlinson has your dispenser!

Self-adjusting Simpli-Flex® Cup Dispensers feature the exclusive patented **Simpli-Flex® Gasket**.

- Totally self-adjusting
- Accurately dispenses paper, plastic, or foam cups up to 64 fl oz (189 cL)
- One-at-a-time dispensing, every time
- Seals cups from contamination
- Constructed of NSF- and FDA-approved materials
- Molded of tear-resistant silicone
- Easy to install – gasket just slips on the dispenser
- One-year warranty
- See page 2



Choose the new Simpli-Size™ Cup Dispenser with easy manual adjustment.

- With one turn, all three Simpli-Size™ fingers adjust at once for simple, simultaneous, snap-into-place adjustment. Fast and easy!
- Spring-loaded dispenser for in-counter or in-cabinet use
- Easy to mount/install
- Can be installed vertically, horizontally, or diagonally
- Easy to clean/dishwasher safe
- Accurately and gently dispenses paper, plastic, and soft foam cups
- NSF listed
- Constructed of NSF- and FDA-grade materials
- One-year warranty
- Patent pending
- See page 9

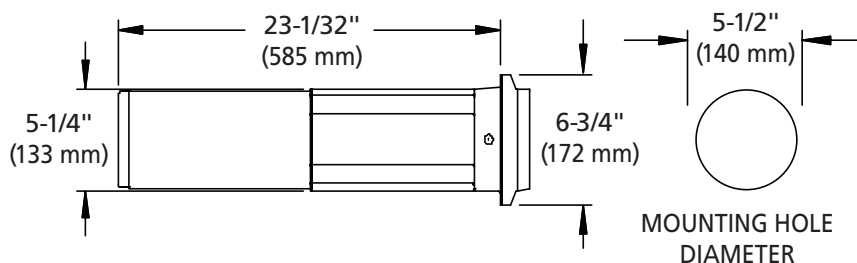


MODULAR® DISPENSING SYSTEMS

The Simpli-Flex® 2000 Cup Dispenser

The Simpli-Flex® 2000 self-adjusting Cup Dispenser is shipped with three Simpli-Flex Gaskets to fit any size paper, plastic, or foam cup up to 44 fl oz (130 cL) or cups with a 2-1/4" – 4-5/8" (57 – 117 mm) lip diameter. Available for in-counter/cabinet mounting or under-counter/wall mounting.

Mounting Specifications for SF2000 Cup Dispenser



Model #1019477



Model #1015470

Model # Description

Dimensions L x Dia inches (mm)



| | | |
|---------|---|--------------------|
| 1015023 | SF2000 Cup Dispenser (for in-counter/cabinet mounting) | 23 x 5 (584 x 127) |
| 1015470 | ESF2000 Cup Dispenser (for under-counter/wall mounting) | 23 x 5 (584 x 127) |

Optional Stainless Steel Clamp Ring

| | | |
|---------|--|--------------------|
| 1019477 | SF2000 Cup Dispenser with stainless steel clamp ring | 23 x 5 (584 x 127) |
| 1019380 | Stainless Steel Clamp Ring Assembly | |

Standard Spares

Case Qty.

Ship Wt. (lbs./kgs.)

| | | | |
|---------|--|---|-------|
| 1415173 | Gasket Kit (includes 5A, 5B and 5E gaskets) | 1 | .5/.2 |
| 1908522 | 5A Gasket | | |
| 1915130 | 5B Gasket | | |
| 1910110 | 5E Gasket | | |
| 1415174 | Screw Packet (for optional dispenser mounting) | 1 | .5/.2 |
| 1905844 | Black Clamp Ring | 1 | .5/.2 |

The Simpli-Flex® 2000 Portion Cup Dispenser

The Simpli-Flex® 2000 Portion Cup Dispenser is shipped complete with three Simpli-Flex Gaskets to dispense portion cups with 1-9/16" – 2-1/3" (40 – 59 mm) lip diameter. Dispenser available for in-counter/cabinet mounting or for under-counter/wall mounting. Shipped 12 per case; approximate ship weight is 15 lbs. (7 kgs.).

Model # Description

Dimensions L x Dia inches (mm)



| | | |
|---------|--|-------------------|
| 1015572 | SFP2000 Portion Cup Dispenser (for in-counter/cabinet mounting) | 14 x 3 (356 x 76) |
| 1015751 | ESFP2000 Portion Cup Dispenser (for under-counter/wall mounting) | 14 x 3 (356 x 76) |

Standard Spares

Case Qty.

Ship Wt. (lbs./kgs.)

| | | | |
|---------|-----------|---|-------|
| 1915669 | 7S Gasket | 1 | .5/.2 |
| 1915581 | 7M Gasket | 1 | .5/.2 |
| 1915592 | 7L Gasket | 1 | .5/.2 |



MODULAR® DISPENSING SYSTEMS



Model #1020396



Model #1019768

Combination Cabinet Dispensers

A popular item in convenience stores and where counter space is limited, these Cabinet Dispensers combine cup, lid, domed lid, and straw dispensing into one area, keeping counters clutter free and organized. Each cabinet is shipped with Simpli-Flex® Cup Dispensers for one-at-a-time dispensing of paper, plastic, or foam cups up to 44 fl oz (130 cL). Cabinets can be customized to fit your needs.

| Model # | Description | Dimensions D x H x W inches (mm) | Case Qty. | Ship Wt. lbs./kgs. |
|---------|---|---|-----------|-----------------------|
| 1019580 | Stainless Steel High-Volume Cabinet with 5 cup dispensers, 4 lid and 2 straw organizers | 24-7/8 x 33-1/2 x 14-1/2 (632 x 851 x 368) | 1 | 60/30 |
| 1020384 | Stainless Steel Cup/Lid/Straw Cabinet with 4 cup dispensers on left side; lid, straw organizers on right | 22-1/4 x 27-3/4 x 14-1/2 (565 x 705 x 368) | 1 | 50/25 |
| 1020396 | Stainless Steel Cup/Lid/Straw Cabinet with 4 cup dispensers on right side; lid, straw organizers on left | 22-1/4 x 27-3/4 x 14-1/2 (565 x 705 x 368) | 1 | 50/25 |
| 1020470 | Stainless Steel Cup/Straw/Domed Lid Cabinet with 4 cup dispensers, 3 domed lid dispensers and 1 straw dispenser | 28 x 35-5/8 x 13 (711 x 905 x 330) | 1 | 50/25 |
| 1019768 | Stainless Steel Lid/Straw Cabinet with 3 lid holders, 1 straw holder | 8 x 28 x 8 (203 x 711 x 203) | 1 | 30/15 |
| 1021031 | Black Painted Aluminum Cabinet with 3 cup dispensers, 2 domed lid dispensers and 2 straw dispensers | 25 x 34 x 8 (635 x 864 x 203) | 1 | 50/25 |
| 1025504 | Black Painted Aluminum Cabinet with 3 cup dispensers and 1 straw dispenser | 25 x 28 x 8 (635 x 711 x 203) | 1 | 50/25 |
| 1025525 | Black Painted Aluminum Cabinet with 4 cup dispensers and 1 straw dispenser | 25 x 35 x 8 (635 x 889 x 203) | 1 | 50/25 |

Countertop cabinets featuring two Simpli-Flex® 2000 Cup Dispensers and built-in top condiment and lid organizer. Black painted aluminum or stainless steel construction.

| | | | | |
|---------|--------------------------------|----------------------------------|---|-------|
| 1021894 | Black Painted Aluminum Cabinet | 23 x 20 x 8 (584 x 508 x 203) | 1 | 25/11 |
| 1023524 | Stainless Steel Cabinet | 23 x 20 x 8 (584 x 508 x 203) | 1 | 25/11 |



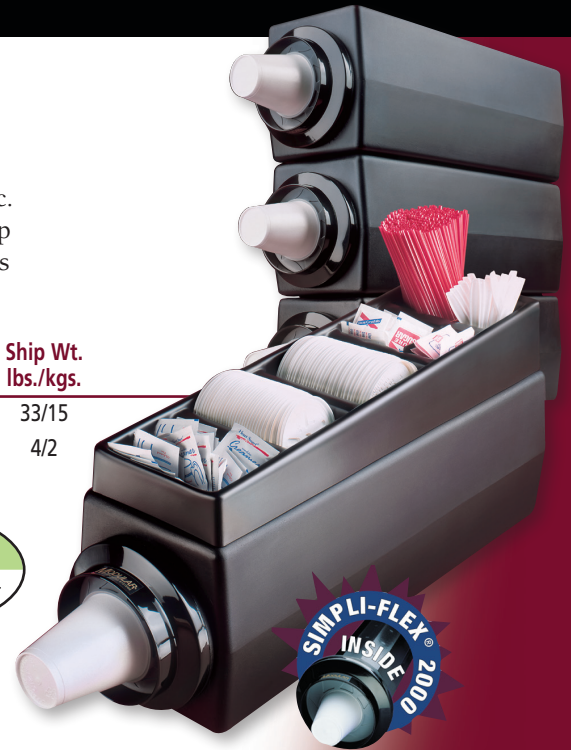
Model #1021894



The Simpli-Flex® 2100 Molded Cabinet

The Simpli-Flex® 2100 Molded Cabinet includes one Simpli-Flex 2000 Cup Dispenser. This unit is durable – molded of heavy-duty, high-impact plastic. This stackable cabinet is great for multiple dispensing applications. Optional top condiment and lid organizer is sold separately, complete with five compartments and four adjustable spacers.

| | Model # | Description | Dimensions D x H x W inches (mm) | Case Qty. | Ship Wt. lbs./kgs. |
|-----|---------|---------------------------------|-------------------------------------|-----------|-----------------------|
| NSF | 1015385 | SF2100 Molded Cabinet | 22 x 9 x 8 (559 x 229 x 203) | 4 | 33/15 |
| | 1015560 | Top Condiment and Lid Organizer | 21 x 4 x 7 (533 x 102 x 178) | 1 | 4/2 |



The Simpli-Flex® 2100 Series Cabinets

The Simpli-Flex® 2100 Series Cabinet Dispensers are shipped complete with Simpli-Flex 2000 Cup Dispensers. These beige or black painted aluminum cabinets have a stainless steel faceplate and are available with one, two, three, or four Cup Dispensers. Stainless steel cabinets are also available.

| | Model # | Description | Dimensions D x H x W inches (mm) | Case Qty. | Ship Wt. lbs./kgs. |
|-----|----------------------------|---------------------------------|-------------------------------------|-----------|-----------------------|
| NSF | Painted Aluminum Cabinets: | | | | |
| | 1015600 | SF2101 Cabinet, beige - 1 hole | 25 x 7 x 8 (635 x 178 x 203) | 1 | 12/5 |
| | 1015599 | SF2102 Cabinet, beige - 2 holes | 25 x 14 x 8 (635 x 356 x 203) | 1 | 17/8 |
| | 1015598 | SF2103 Cabinet, beige - 3 holes | 25 x 21 x 8 (635 x 533 x 203) | 1 | 22/10 |
| | 1015393 | SF2104 Cabinet, beige - 4 holes | 25 x 28 x 8 (635 x 711 x 203) | 1 | 25/11 |
| | 1017024 | SF2101 Cabinet, black - 1 hole | 25 x 7 x 8 (635 x 178 x 203) | 1 | 12/5 |
| | 1016022 | SF2102 Cabinet, black - 2 holes | 25 x 14 x 8 (635 x 356 x 203) | 1 | 17/8 |
| | 1015778 | SF2103 Cabinet, black - 3 holes | 25 x 21 x 8 (635 x 533 x 203) | 1 | 22/10 |
| | 1015765 | SF2104 Cabinet, black - 4 holes | 25 x 28 x 8 (635 x 711 x 203) | 1 | 25/11 |
| | Stainless Steel Cabinets: | | | | |
| | 1015936 | SF2101 Cabinet, SS - 1 hole | 25 x 7 x 8 (635 x 178 x 203) | 1 | 12/5 |
| | 1015909 | SF2102 Cabinet, SS - 2 holes | 25 x 14 x 8 (635 x 356 x 203) | 1 | 17/8 |
| | 1015904 | SF2103 Cabinet, SS - 3 holes | 25 x 21 x 8 (635 x 533 x 203) | 1 | 22/10 |
| | 1015935 | SF2104 Cabinet, SS - 4 holes | 25 x 28 x 8 (635 x 711 x 203) | 1 | 25/11 |



Model #1015778

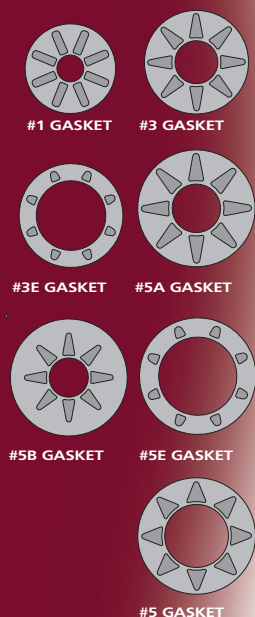
Stainless steel cup dispensers are available for these cabinets. Optional painted colors are red, white, and gray. Contact factory for availability and lead times. Minimum order or setup charge may apply.

See page 12 for more information regarding condiment dispensers for these cabinets.



MODULAR® DISPENSING SYSTEMS

Simpli-Flex® Gasket Reference Chart



| GASKET (Part #) Cup Lip Diameter | SF2000 For 3.5-44 oz. cups | CSF1003 For portion cups | CSF1004 For 3.5-22 oz. cups | CSF1005 For 16-44 oz. cups | CSF1006 For jumbo cups |
|---|-------------------------------|-----------------------------|--------------------------------|-------------------------------|---------------------------|
| #1 (1905841) 1-7/16"-2-3/8" 37mm-60mm | | ✓ | | | |
| #3 (1904359) 2-3/8"-3-1/2" 60mm-89mm | | | ✓ | | |
| #3E (1910115) 3-1/2"-3-11/16" 89mm-94mm | | | ✓ | | |
| #5A (1908522) 3-1/2"-4-7/16" 89mm-113mm | ✓ | | | ✓ | |
| #5B (1915130) 2-1/4"-3-1/2" 57mm-89mm | ✓ | | | ○ | |
| #5E (1910110) 4-1/4"-4-5/8" 108mm-117mm | ✓ | | | ✓ | |
| #5 (1907797) 3-11/16"-5-1/2" 94mm-140mm | | | | | ✓ |

✓ = Included with dispenser ○ = Optional



Simpli-Flex® Cup Dispensers for in-counter and cabinet mounting

Self-adjusting spring-loaded in-counter/cabinet-mount Cup Dispensers.

Dispenser tube is made of stainless steel. Deluxe CSF1004 and Deluxe CSF1005 dispensers shipped with two Simpli-Flex® self-adjusting gaskets to dispense cups from 3.5 – 44 fl oz (10 – 130 cL).

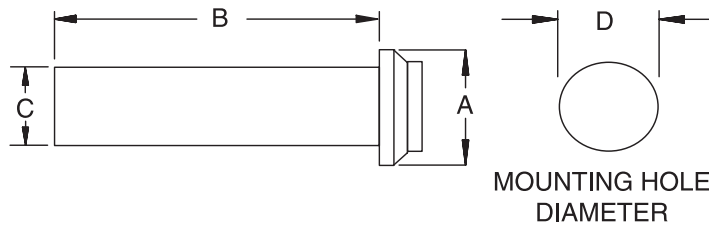


| Model # | Description | Dimensions L x Dia inches (mm) | Case Qty. | Ship Wt. lbs./kgs. |
|------------------------|---|-----------------------------------|-----------|-----------------------|
| 1007699 | CSF1003 for extra small/portion cups | 24 x 3 (610 x 76) | 12 | 36/16 |
| 1015202 | Deluxe CSF1004 for medium cups | 24 x 4 (610 x 102) | 6 | 22/10 |
| Standard Spares | | | | |
| | 1904359 #3 Gasket | | 1 | .5/.2 |
| | 1910115 #3E Gasket | | 1 | .5/.2 |
| | 1905840 Black Clamp Ring | | 1 | .5/.2 |
| 1015201 | Deluxe CSF1005 for large cups | 24 x 5 (610 x 127) | 6 | 26/12 |
| Standard Spares | | | | |
| | 1908522 #5A Gasket | | 1 | .5/.2 |
| | 1910110 #5E Gasket | | 1 | .5/.2 |
| | 1905844 Black Clamp Ring | | 1 | .5/.2 |
| 1008703 | CSF1006 for jumbo cups | 24 x 6 (610 x 152) | 6 | 32/15 |

See page 6 for mounting specifications.

SIMPLI-FLEX® CUP DISPENSER MOUNTING CHART

| | CSF1003 | CSF1004 | CSF1005 | CSF1006 |
|---|-------------------|-------------------|-------------------|-------------------|
| A | 4-21/32" (118 mm) | 5-17/32" (141 mm) | 6-23/32" (171 mm) | 7-25/32" (198 mm) |
| B | 22-1/2" (572 mm) | 22-1/2" (572 mm) | 22-1/2" (572 mm) | 22-1/2" (572 mm) |
| C | 3-3/32" (79 mm) | 4" (102 mm) | 5" (127 mm) | 6-5/32" (156 mm) |
| D | 3-1/2" (89 mm) | 4-3/8" (111 mm) | 5-1/2" (140 mm) | 6-9/16" (167 mm) |



Simpli-Flex® Cup Dispensers for under-counter or surface mounting

Self-adjusting spring-loaded Cup Dispensers for under-counter or surface mounting. Dispenser tube is made of stainless steel. Deluxe ESF1004 and Deluxe ESF1005 dispensers shipped with two Simpli-Flex® self-adjusting gaskets to dispense cups from 3.5 – 44 fl oz (10 – 130 cL).

| | Model # | Description | Dimensions L x Dia inches (mm) | Case Qty. | Ship Wt. lbs./kgs. |
|-----|---------|-----------------------------------|-----------------------------------|-----------|-----------------------|
| NSF | 1007614 | Deluxe ESF1004 for medium cups | 24 x 4 (610 x 102) | 12 | 41/19 |
| | 1008494 | Deluxe ESF1005 for large cups | 24 x 5 (610 x 127) | 12 | 48/22 |
| | 1008707 | ESF1006 for jumbo cups | 24 x 6 (610 x 152) | 6 | 32/15 |

Simpli-Flex® Cup Dispensers for wall and stand mounting

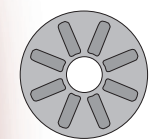
Self-adjusting pull-type Cup Dispensers for wall and stand mounting. Dispenser tube is made of stainless steel. Deluxe SF1004 and Deluxe SF1005 dispensers shipped with two Simpli-Flex® self-adjusting gaskets to dispense cups from 3.5 – 44 fl oz (10 – 130 cL).

| | Model # | Description | Dimensions L x Dia inches (mm) | Case Qty. | Ship Wt. lbs./kgs. |
|-----|---------|--|-----------------------------------|-----------|-----------------------|
| NSF | 1007516 | SF1003 for extra small/portion cups | 16 x 3-1/8 (406 x 79) | 12 | 23/10 |
| | 1007664 | Deluxe SF1004 for medium cups | 24 x 4 (610 x 102) | 12 | 37/17 |
| | 1008188 | Deluxe SF1005 for large cups | 24 x 5 (610 x 127) | 12 | 44/20 |
| | 1008702 | SF1006 for jumbo cups | 24 x 6 (610 x 152) | 6 | 30/14 |

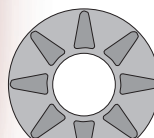


See pages 7 - 8 for mounting stands and accessories.

MODULAR® DISPENSING SYSTEMS



1015P
Model #1905841



1002
Model #1905842

SIMPLI-FLEX® CONE DISPENSER SELECTION CHART

| CONE LIP DIAMETER | | DISPENSER MODEL | |
|-------------------|-----------------|-----------------|--------|
| MIN. | MAX. | 1015P | 1002 |
| 1-3/8" (35 mm) | 2-1/4" (57 mm) | CAKE | |
| 1-1/2" (38 mm) | 2" (51 mm) | SUGAR | |
| 1-1/2" (38 mm) | 2" (51 mm) | WAFFLE | |
| 2-3/16" (56 mm) | 3-1/16" (78 mm) | | CAKE |
| 3-1/4" (83 mm) | 3-3/8" (86 mm) | | DOUBLE |
| 2-1/2" (64 mm) | 3-5/16" (84 mm) | | WAFFLE |

Simpli-Flex® Ice Cream Cone Dispensers

Prevent breakage, protect from contamination, and keep ice cream cones fresher with the Simpli-Flex® Cone Dispensers for cake, waffle, and sugar cones with a 1-3/8" – 3-3/8" (35 – 86 mm) cone lip diameter. Simpli-Flex Cone Dispensers are completely self-adjusting, ensuring one-at-a-time dispensing. Available in heavy-duty, polished stainless steel or tough gray-tinted plastic. Dispenser mount options include wall, stand, in-counter, or under-counter.



Cone dispensers
and Z-stand sold
separately.



| Model # | Description | Dimensions L x Dia inches (mm) | Case Qty. | Ship Wt. lbs./kgs. |
|---------|---|--------------------------------------|-----------|-----------------------|
| 1003854 | ESF1002 spring loaded for medium to large cones (uses gasket #1905842) | 24 x 4 (610 x 102) | 12 | 41/19 |
| 1003846 | SF1002 stainless steel tube for medium to large cones (uses gasket #1905842) | 24 x 4 (610 x 102) | 12 | 37/17 |
| 1003848 | SF1002P plastic tube for medium to large cones (uses gasket #1905842) | 31 x 4 (787 x 102) | 12 | 40/18 |
| 1003850 | SF1015P plastic tube for small cones (uses gasket #1905841) | 19 x 3-1/8 (483 x 79) | 12 | 30/14 |
| 1007710 | SF1015P-30" plastic tube 30" long tube for small cones (uses gasket #1905841) | 31 x 3-1/8 (787 x 79) | 12 | 32/15 |

2

WARRANTY

TWO YEAR WARRANTY
ON PLASTIC DISPENSER
(One year warranty
on gaskets)

5

WARRANTY

FIVE YEAR WARRANTY ON
STAINLESS STEEL DISPENSERS
(One year warranty
on gaskets)

Rotary Stands

Countertop rotating stands for cup, tubular lid, and ice cream cone dispensers. Dispensers sold separately.



Cup and cone
dispensers and
rotary stands sold
separately.

| Model # | Description | Dimensions D x H x W inches (mm) | Case Qty. | Ship Wt. lbs./kgs. |
|---------|--|-------------------------------------|-----------|-----------------------|
| 1003860 | 1007-024; 4-sided stand | 13 x 42 x 13 (330 x 1067 x 330) | 1 | 10/5 |
| 1003863 | 1007-624; 6-sided stand | 13 x 42 x 13 (330 x 1067 x 330) | 1 | 10/5 |
| 1009646 | 1007-400; condiment caddy w/four 1-quart inserts | 13 x 2 x 13 (330 x 51 x 330) | 1 | 4/2 |

Z-Stands

Countertop Z-Stands for cup, lid, and ice cream cone dispensers. Made of stainless steel, painted gray. Dispensers sold separately.

| Model # | Description | Dimensions D x H x W inches (mm) | Case Qty. | Ship Wt. lbs./kgs. |
|--------------------|---|-------------------------------------|-----------|-----------------------|
| NSF 1008213 | 1008-20Z for any 2-cup or lid dispensers | 24 x 29 x 11 (610 x 737 x 279) | 1 | 6/3 |
| 1003865 | 1008-30Z for any 3-cup or lid dispensers | 24 x 29 x 11 (610 x 737 x 279) | 1 | 6/3 |
| 1009316 | 1008-40Z for any 4-cup or lid dispensers | 24 x 29 x 11 (610 x 737 x 279) | 1 | 7/3 |
| 1003870 | 1008-50Z for any 5-cup or lid dispensers | 24 x 29 x 12 (610 x 737 x 305) | 1 | 7/3 |
| 1003871 | 1009 High Volume Stand for any 8-cup or lid dispensers | 23 x 33 x 11 (584 x 838 x 279) | 1 | 16/7 |



Grab-N-Go Cup Dispenser Kit

Designed for use at checkout registers to maximize and drive beverage sales at time of checkout. Grab-N-Go Cup Dispenser Kits include a cup dispenser and mounting hardware to support four mounting options for attaching to walls, poles, and counters. Installation instructions are included. Cup Dispensers and Poles are sold separately.

| Model # | Description | Dimensions L x Dia inches (mm) | Case Qty. | Ship Wt. lbs./kgs. |
|----------------------------|----------------------------------|-----------------------------------|-----------|-----------------------|
| NSF Cup Dispensers: | | | | |
| 1022589 | SF1005 with fountain drink decal | 24 x 5 (610 x 127) | 1 | 4/2 |
| 1022590 | SF1005 with coffee decal | 24 x 5 (610 x 127) | 1 | 4/2 |
| Mounting Stands/Poles: | | | | |
| 1021984 | Stand/Pole, painted red | 30 L (762) | 1 | 4/2 |
| 1022086 | Stand/Pole, painted blue | 30 L (762) | 1 | 4/2 |



Wire Cup Dispensers

This Wire Cup Dispenser is an affordable cup-dispensing solution when counter space is at a minimum. Dispense up to four different-sized paper, plastic, or foam cups. Easy adjustment — simply twist side springs to adjust. Suction feet keep dispenser firmly in place. A top lid organizer is available and sold separately.

| Model # | Description | Dimensions D x H x W inches (mm) | Case Qty. | Ship Wt. lbs./kgs. |
|---------|----------------------------|--|-----------|-----------------------|
| 1019971 | Wire Cup Dispenser, 4 tier | 18-1/4 x 23-3/4 x 5-7/8 (464 x 603 x 149) | 1 | 6/3 |
| 1020372 | Top Lid Organizer | 21-11/16 (L) x 4-13/16 (W) (551 x 122) | 1 | 2/1 |



MANUAL ADJUSTING DISPENSING SYSTEMS

Simpli-Size™ Dispenser

Manually adjustable. With one turn, all three Simpli-Size™ fingers adjust at once for simple, simultaneous, snap-into-place adjustment. Spring-loaded dispenser for in-counter or in-cabinet use. Constructed of NSF- and FDA-grade materials. U.S. Patent No. 8,763,854 and 9,198,526. See page 2 for mounting specifications.



| Model # | Description | Dimensions L x Dia inches (mm) | Case Qty. | Ship Wt. lbs./kgs. |
|---------|---|-----------------------------------|-----------|-----------------------|
| 1023593 | Small/Medium For cups with a 3" - 3-3/4" lip diameter | 23 x 5 (584 x 127) | 6 | 19/9 |
| 1023095 | Medium/Large For cups with a 3-3/4" - 4-3/8" lip diameter | 23 x 5 (584 x 127) | 6 | 19/9 |



ELC Cup Dispensers

Spring-loaded ELC Cup Dispensers with stainless steel mounting collar for counter or cabinet mounting. Tube and collar are made of FDA-grade stainless steel.



| Model # | Description | Dimensions L x Dia inches (mm) | Case Qty. | Ship Wt. lbs./kgs. |
|---------|---------------------|-----------------------------------|-----------|-----------------------|
| 1003761 | ELC1015R (sm cups) | 23-1/2 x 3 (597 x 76) | 12 | 32/15 |
| 1003767 | ELC1001R (med cups) | 23-1/2 x 3-5/8 (597 x 92) | 12 | 39/18 |
| 1003782 | ELC1002R (med cups) | 23-1/2 x 4 (597 x 102) | 12 | 42/19 |
| 1003799 | ELC1017R (lrg cups) | 23-1/2 x 4-3/8 (597 x 111) | 6 | 23/10 |
| 1003807 | ELC1018R (lrg cups) | 23-1/2 x 5 (597 x 127) | 6 | 28/13 |
| 1003818 | ELC1020R (xlg cups) | 23-1/2 x 5-13/32 (597 x 137) | 6 | 30/14 |



Pull-Type Cup Dispensers

Adjustable stainless steel Pull-Type Cup Dispensers for wall or stand mounting.



Model #1003713



Model #1011720

| Model # | Description | Dimensions L x Dia inches (mm) | Case Qty. | Ship Wt. lbs./kgs. |
|---------|--|-----------------------------------|-----------|-----------------------|
| 1008783 | 1013 (small cups) | 15-1/2 x 3 (394 x 76) | 12 | 27/12 |
| 1003700 | 1001 (medium cups) | 23-1/8 x 3-5/8 (587 x 92) | 12 | 27/12 |
| 1003713 | 1002 (medium cups) | 23-1/8 x 4 (587 x 102) | 12 | 32/15 |
| 1003721 | 1017 (large cups) | 23-1/8 x 4-3/8 (587 x 111) | 12 | 37/17 |
| 1003725 | 1018 (large cups) | 23-1/8 x 5 (587 x 127) | 12 | 40/18 |
| 1003730 | 1020 (extra large cups) | 23-1/8 x 5-13/32 (587 x 137) | 6 | 24/11 |
| 1003692 | 1010 Stainless Water Cup Dispenser | 15-1/2 x 2-11/16 (394 x 68) | 12 | 30/14 |
| 1003696 | 1015 Stainless Water Cup Dispenser | 15-1/2 x 3 (394 x 76) | 12 | 30/14 |
| 1011721 | WCP1003AL Plastic Water Cup Dispenser clear tube w/almond head | 15-1/2 x 3 (394 x 76) | 24 | 30/14 |
| 1011720 | WCP1003W Plastic Water Cup Dispenser clear tube w/white head | 15-1/2 x 3 (394 x 76) | 24 | 30/14 |



| Dispenser Model # | Cup Lip Diameter Inches (mm) |
|----------------------|---------------------------------|
| 1013 | 2-5/16 - 2-15/16 (59 - 75) |
| 1010 | 2-5/16 - 2-11/16 (59 - 68) |
| 1015 | 2-1/2 - 2-15/16 (64 - 75) |
| 1001 | 2-3/4 - 3-3/8 (70 - 86) |
| 1002 | 3-1/4 - 3-5/8 (83 - 92) |
| 1017 | 3-1/2 - 4-1/16 (89 - 103) |
| 1018 | 4 - 4-3/4 (102 - 121) |
| 1020 | 4-1/2 - 5-1/16 (114 - 129) |

See pages 7 and 8 for optional
mounting stands.

SELECTION CHART FOR ADJUSTABLE CUP DISPENSERS

Specifications subject to change without notice.
All dimensions are for reference only.

AIR POT STATIONS & LID DISPENSERS

Air Pot Stations

A one-stop shop for your coffee or tea service setup. Vacuum-formed heavy-duty organizer keeps air pots, condiments, stir sticks and more together for quick and easy service. Each air pot station includes stainless steel drip trays and air pot risers. Available in double or single air pot size.

| Model # | Description | Dimensions D x W inches (mm) | Case Qty. | Ship Wt. lbs./kgs. |
|---------|------------------------|---------------------------------|-----------|-----------------------|
| 1023361 | Double Air Pot Station | 12-1/2 x 25-1/4 (318 x 641) | 1 | 8/4 |
| 1023359 | Single Air Pot Station | 12-1/2 x 16-1/2 (318 x 419) | 1 | 5/2 |



Countertop Adjustable Lid Dispensers

Stainless steel Countertop Lid Dispensers with adjustable dividers for several size lids. Available in various widths and heights.

| Model # | Description | Dimensions D x H x W inches (mm) | Case Qty. | Ship Wt. lbs./kgs. |
|---------|---|---|-----------|-----------------------|
| 1004054 | L200-15 3 adjustable dividers | 4-1/2 x 7 x 15-1/2 (114 x 178 x 394) | 8 | 35/16 |
| 1004063 | L212-15 Like the L200-15, but 12-1/2" (318 mm) tall | 4-1/2 x 12-1/2 x 15-1/2 (114 x 318 x 394) | 1 | 7/3 |
| 1004056 | L200-19 4 adjustable dividers | 4-1/2 x 7 x 19 (114 x 178 x 483) | 6 | 37/17 |
| 1004064 | L212-19 Like the L200-19, but 12-1/2" (318 mm) tall | 4-1/2 x 12-1/2 x 19 (114 x 318 x 483) | 1 | 9/4 |
| 1004061 | L200-22 5 adjustable dividers | 4-1/2 x 7 x 22 (114 x 178 x 559) | 6 | 38/17 |
| 1004065 | L212-22 Like the L200-22, but 12-1/2" (318 mm) tall | 4-1/2 x 12-1/2 x 22 (114 x 318 x 559) | 1 | 10/5 |
| 1004068 | L200MB Mounting Bracket Kit to mount dispenser on fountain head or wall | | 1 | 2/1 |



Model #1004061

Model #1004065

Tubular Adjustable Lid Dispensers

Stainless steel Tubular Lid Dispensers with three adjustable dividers for several size lids. Lid dispensers can be wall or stand mounted.

| Model # | Description | Dimensions L x Dia inches (mm) | Case Qty. | Ship Wt. lbs./kgs. |
|---------|--|-----------------------------------|-----------|-----------------------|
| 1011795 | LO24 Maximum lid diameter is 4" (102 mm) | 23-1/8 x 4-1/4 (587 x 108) | 6 | 12/5 |
| 1011796 | LO46 Maximum lid diameter is 5-1/4" (133 mm) | 23-1/8 x 5-13/32 (587 x 137) | 6 | 21/10 |



Countertop Lid Organizers

Countertop Lid Organizers feature a durable stainless steel welded frame construction and a sturdy plastic insert with three rows for lids and a bottom row for condiments and straws. Removable plastic insert allows for easy cleaning. Available in large and small designs to suit various countertop footprints.

| Model # | Description | Dimensions D x W x H inches (mm) | Case Qty. | Ship Wt. lbs./kgs. |
|---------|---------------------|--|-----------|-----------------------|
| 1025569 | Large Lid Organizer | 16-3/4" x 11-18" x 12-1/4" (426 x 280 x 318) | 1 | 7/3 |
| 1025560 | Small Lid Organizer | 16-3/4"D x 8-1/4"W (426 x 280 x 210) | 1 | 5/2 |



CONDIMENT DISPENSERS & ACCESSORIES



Domed Lid Organizer

Organizes beverage cup lids used for slushies, frozen drinks, etc. One-inch stainless steel base with rubber feet. Holds up to 200 domed lids. For on-counter or in-counter mounting.

| Model # | Description | Dimensions D x H x W inches (mm) | Case Qty. | Ship Wt. |
|---------|---------------------|--|-----------|----------|
| 1019467 | Domed Lid Organizer | 6-1/2 x 11-1/4 x 21-3/4 (165 x 286 x 552) | 1 | 4/2 |



Straw Dispensers

Wrapped Straw Dispensers help reduce waste and organize space. Stainless steel dispensers.

| Model # | Description | Dimensions inches (mm) | Case Qty. | Ship Wt. |
|---------|-------------------------------------|------------------------------|-----------|----------|
| 1003989 | ELC5006 for counter mount, large | 5-1/2 (140) mounting hole | 1 | 2/1 |
| 1003990 | ELC9006 for counter mount, small | 4-3/8 (111) mounting hole | 1 | 1/5 |



Model #1004005

5500 Dairy Creamer Dispensers

An insulated dispenser for chilled dairy creamer packets. Refreezable cold packs keep the creamer under 40°F (4°C) for up to eight hours. Available in brushed stainless steel or beige polyurethane finish. Holds approximately 300 creamer packets. Optional top coffee service organizer is available with two compartments for organizing sugar, sweetener, powdered creamer, and stir sticks.

| Model # | Description | Dimensions D x H x W inches (mm) | Case Qty. | Ship Wt. lbs./kgs. |
|---------|--|--|-----------|-----------------------|
| 1004005 | 5500-SS Dairy Creamer Stainless steel w/ 2 cold packs | 15 x 11-5/8 x 6-5/8 (381 x 295 x 168) | 1 | 7/3 |
| 1004002 | 5500 Dairy Creamer Painted beige w/ 2 cold packs | 15 x 11-5/8 x 6-5/8 (381 x 295 x 168) | 1 | 7/3 |
| 1004008 | 5600 Top Coffee Service Organizer | 10 x 4-1/2 x 6-5/8 (254 x 114 x 168) | 4 | 8/4 |
| 1904516 | 17-2500 Stir Stick Insert, white plastic | 3 x 3-1/2 x 6-1/2 (76 x 89 x 165) | 6 | 1/5 |
| 1904890 | Refreezable Cold Pack | | 12 | 29/13 |



Model #1004002
with 1004008



1200 High-Volume Condiment Dispenser

Four-compartment gravity-fed Condiment Dispenser for high-volume use. Holds up to 1500 condiment packets. Top-loading feature ensures product rotation. Simple to load and clean. Painted gray aluminum construction.

| | Model # | Description | Dimensions D x H x W inches (mm) | Case Qty. | Ship Wt. lbs./kgs. |
|---|---------|--------------------------------------|-------------------------------------|-----------|-----------------------|
|  | 1003993 | 1200 High-Volume Condiment Dispenser | 24 x 26 x 8 (610 x 660 x 203) | 1 | 22/10 |



6000 Condiment Dispensers


Four-compartment Condiment Dispenser tray will mount on top of SF2100 Series Molded Cabinets.

| | Model # | Description | Dimensions D x H x W inches (mm) | Case Qty. | Ship Wt. lbs./kgs. |
|--|---------|---|--------------------------------------|-----------|-----------------------|
| | 1004012 | 6000 Condiment Dispenser in aluminum | 24 x 6 x 8 (610 x 152 x 203) | 6 | 21/10 |
| | 1010072 | 6000 Condiment Dispenser in stainless steel | 24 x 6 x 8 (610 x 152 x 203) | 6 | 21/10 |
| | 1904508 | Quart Insert, white plastic | 5-5/8 x 3 x 6 (142 x 76 x 150) | 12 | 2/1 |
| | 1904516 | Stir Stick Insert, white plastic | 3 x 3-1/2 x 6-1/2 (76 x 89 x 165) | 6 | 1/5 |



9000 Condiment Dispenser

The 9000 Condiment Dispenser features nine 1-pint inserts inside a stainless steel body. Additional pint inserts are available. Ideal for organizing multiple condiment and coffee service packets.

| | Model # | Description | Dimensions D x H x W inches (mm) | Case Qty. | Ship Wt. lbs./kgs. |
|---|---------|--|--------------------------------------|-----------|-----------------------|
|  | 1004017 | 9000 Condiment Dispenser | 19 x 5-5/8 x 12 (483 x 143 x 305) | 1 | 7/3 |
| | 1904512 | 52-1016 Pint Insert in white plastic for 9000 dispenser Fits 2.7" x 5.3" (69 x 139 mm) mounting hole | 3 x 3 x 5-5/8 (76 x 76 x 143) | 12 | 1/5 |



Pint Insert #1904512



NAPKIN DISPENSERS & TRASH CHUTES

In-Counter/Counter Mount Napkin Dispensers

Stainless steel spring-loaded Napkin Dispensers with latched faceplates for easy and secure closing. Mount horizontally, vertically or diagonally in a counter or cabinet. Dispenses one napkin at a time and accommodates 250 – 500 napkins.

Model #1010593
(in-counter)



Model #1003980
(countertop)

| Model # | Description | Dimensions D x H x W inches (mm) | Case Qty. | Ship Wt. lbs./kgs. |
|---------|---|---|-----------|-----------------------|
| 1003971 | 4000-C10 Holds 250 napkins | 6-1/2 x 10-1/2 x 8-1/4 (165 x 267 x 210) | 4 | 19/9 |
| 1010593 | 4000-C10N Holds 250 napkins | 6-1/2 x 10-1/2 x 8-1/4 (165 x 267 x 210) | 4 | 19/9 |
| 1012066 | 4000-C24 Holds 500 napkins | 6-1/2 x 25 x 8-1/4 (165 x 635 x 210) | 1 | 7/3 |
| 1007462 | 4000-TC7 Countertop model Holds 250 napkins | 11 x 7-1/2 x 9 (279 x 191 x 229) | 4 | 27/12 |
| 1003980 | 4000-SD9 Countertop model Holds 250 napkins w/top straw holder | 11 x 9 x 9 (279 x 229 x 229) | 4 | 27/12 |

Stainless Steel Trash Chutes

Designed for in-counter applications, these one-piece Trash Chutes are manufactured of 22-gage, T-304 stainless steel with a highly polished lip flange. Available in 4", 6", and 9" diameter sizes.



| Model # | Description | Dimensions inches (mm) | Case Qty. | Ship Wt. lbs./kgs. |
|---------|---------------------------------|--|-----------|-----------------------|
| 1920105 | 4" Trash Chute | 4-1/2 H (114) Hole cutout: 4-3/16 – 4-7/32 (106 – 107) | 1 | 1/5 |
| 1920106 | 6" Trash Chute | 5 H (127) Hole cutout: 5-17/32 – 5-9/16 (140 – 141) | 1 | 1/5 |
| 1920107 | 9" Trash Chute | 2-1/4 H (57) Hole cutout: 9-1/16 – 9-3/32 (230 – 231) | 1 | 1/5 |
| 1924888 | 6" Trash Chute with flat rim | 5 H (127) Hole cutout: 5-17/32 – 5-9/16 (140 – 141) | 1 | 1/5 |

Knock Chute

Round 6" stainless steel Knock Chute makes emptying coffee or espresso filters easy.



| Model # | Description | Dimensions inches (mm) | Case Qty. | Ship Wt. lbs./kgs. |
|---------|-------------|--|-----------|-----------------------|
| 1024673 | Knock Chute | 5 H (127) Hole cutout: 5-3/4 (146) | 1 | 1/5 |

| INDEX | Page |
|---|---------|
| Simpli-Flex® Gasket & Dispensing System | 1 |
| Simpli-Flex® 2000 Products | 2 |
| Combination Cabinet Dispensers | 3 |
| Simpli-Flex® Cabinets & Cup Dispensers | 4 – 6 |
| Ice Cream Cone Dispensers | 7 |
| Mounting Stands | 7 – 8 |
| Grab-N-Go Cup Dispenser Kit | 8 |
| Wire Cup Dispensers..... | 8 |
| Adjustable Cup Dispensers | 9 |
| Air Pot Stations | 10 |
| Lid, Straw, Creamer & Condiment Dispensers..... | 10 – 12 |
| Napkin Dispensers | 13 |
| Trash Chutes, Knock Chutes | 13 |

Tomlinson Industries is
a recipient of the
President's E-Star Award
for exporting excellence.



Most Tomlinson
products are
NSF listed.



LIMITED WARRANTY

We guarantee to the original purchaser of each Tomlinson product that any part thereof which proves to be defective in material or workmanship within one year – unless otherwise specified – of the date of shipment will be repaired or a replacement part furnished F.O.B. our factory. Warranty will not apply if our examination shows product to be defective as the result of negligence, abuse, misapplication or alteration by other than ourselves.

Tomlinson will not be responsible for unauthorized field service. Contact factory for instructions.

TERMS: Net 30 days, F.O.B. plant, Cleveland, Ohio U.S.A. Minimum order requirement is \$100.00 net.

RETURNS: Return of merchandise requires an RMA number. Authorized returns are subject to handling and re-stocking charges of 15%. Items returned to factory must have transportation charges prepaid. Custom items are not returnable.

FOR RESALE ONLY: Prices and specifications subject to change without notice. We reserve the right to correct printing errors.



13700 Broadway Ave.
Cleveland, OH 44125-1992
Phone: 216-587-3400, Ext. 224
FAX: 216-587-6192

www.tomlinsonind.com

World Class, Worldwide



CROWN BRANDS, LLC